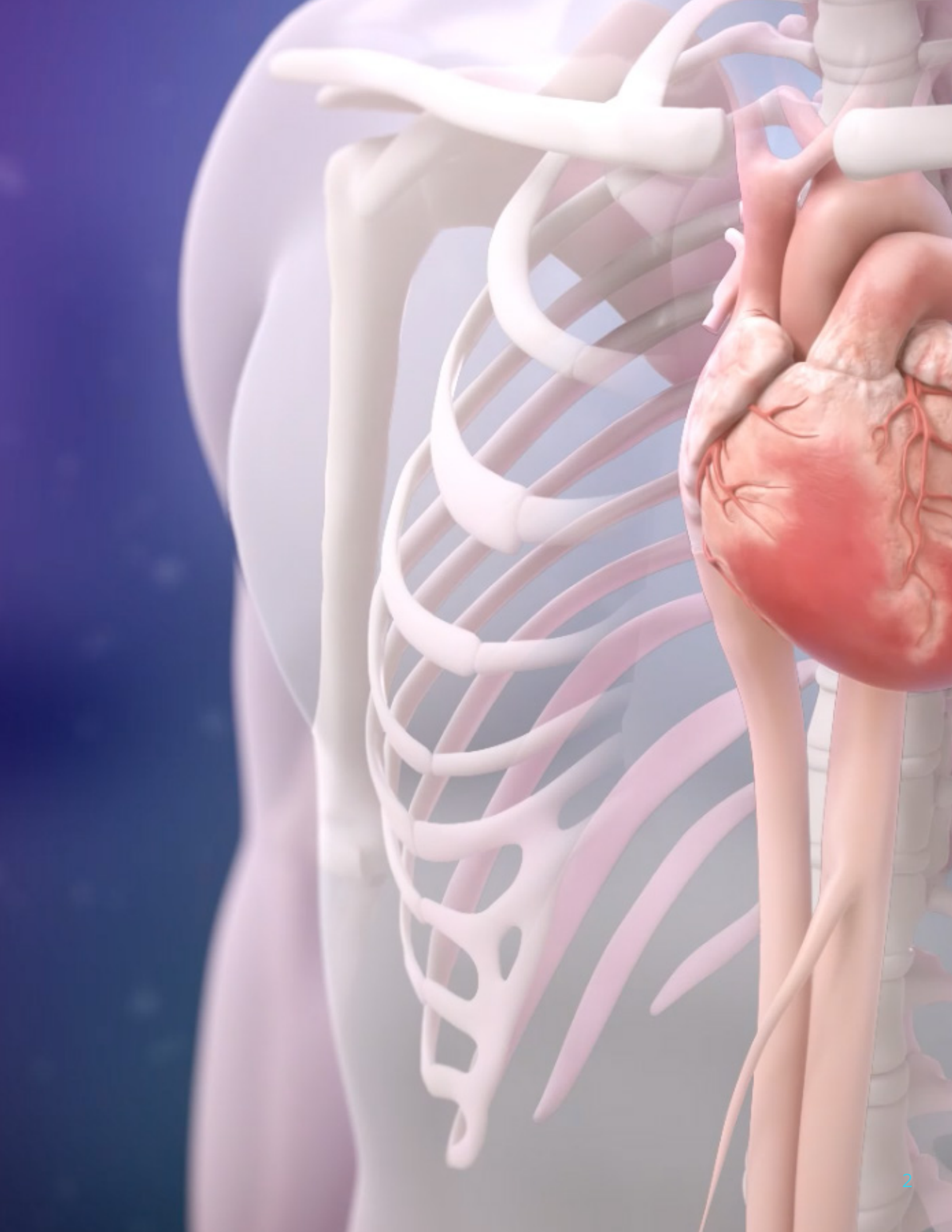




EPICTM PLUS VALVE

**WHAT 7 FACTS
SHOULD YOU KNOW?**



Introduction

A New Lifelong Approach to Heart Valve Replacement Surgery Has Emerged

Patients needing heart valve replacement surgery have important considerations about the safety and the performance of devices used to treat valvular disorders including aortic stenosis and mitral regurgitation.

Today, there are many different types of heart valve replacement devices for patients and their doctors to choose from.

- There are mechanical valves that are made from durable materials that require the use of blood thinners to prevent blood clots.
- There are tissue valves that are made from animal tissue of cows (bovine) and pigs (porcine). Patients who receive tissue valves do not typically require the long-term use of blood thinners.

Thanks to new innovations and technologies, patients and their doctors have a new and unique ability to plan for the lifelong management of heart valve disease.

For example... Research suggests that surgical tissue valves last between 10 to 15 years. Now, thanks to the development of transcatheter devices, medical teams can insert a new heart valve inside a failing tissue valve using a special procedure known as a “Valve-in-Valve” procedure.

This means that a patient can now receive a second tissue valve during a re-operation without an incision to the chest (or ribs) and without the use of the heart-lung machine.

This eBook will help you learn about the new Epic™ Plus tissue valve made by Abbott, a sponsor of HeartValveSurgery.com. As you and your doctor consider the best heart valve replacement option for you, here are seven facts specific to the Epic Plus valve to help you learn about this unique device that can help you now -- and in the future.

Fact #1

The Epic™ Plus Valve Has a Special History

The new Epic Plus valve received a Food & Drug Administration (FDA) approval on September 22, 2021.

However, this unique tissue valve has a long history of durability and performance. The original Epic valve was first implanted in 2008.

To date, there have already been over 250,000 Epic valves implanted in patients around the world.

The Epic Plus valve is the “next-generation” of the Epic valve platform.

Built upon the proven success of its predecessor, the Epic Plus valve provides patients and their medical teams new innovations and technologies for the lifetime management of heart valve disease without the lifelong use of blood thinners (anticoagulants).



Since 2008, the Epic valve has been implanted in over 250,000 patients around the world.



EPIC™ PLUS MITRAL

STENTED TISSUE VALVE

Fact #2

The Epic™ Plus Valve Is Designed for Patients with Aortic & Mitral Valve Disease

There are two unique versions of the Epic Plus valve.

For patients with mitral valve disease, including mitral stenosis and mitral regurgitation, the Epic Plus Mitral valve is proven to be a reliable implant for patients.

For patients with aortic valve disease, including aortic stenosis and aortic regurgitation, the Epic Plus Supra valve delivers excellent durability.



EPIC™ PLUS SUPRA

AORTIC STENTED TISSUE VALVE

Fact #3

The Epic™ Valve Has Excellent 10-Year Results

The Epic valve platform offers patients excellent durability and proven performance. Research suggests that 96% of patients who received the Epic Mitral valve were “free from re-operation” ten years after implant.



Epic Plus Mitral Valve

96%

Freedom from
Reoperation at 10 Years¹

The Epic Plus valve has several unique features that were designed to extend the durability of this valve:

- A triple composite leaflet design
- The Linx™ Anti-Calcification treatment may improve long-term performance
- Stented valve framework

¹Jawad, Khalil, Sven Lehmann, Alex Koziarz, Maja Dieterlen, Stefan Feder, Martin Misfeld, Jns Garbade, Vivek Rao, and Michael Borger. “Midterm results after St Jude Medical Epic porcine xenograft for aortic, mitral, and double valve replacement.” Journal of Cardiac Surgery 35, no. 8 (2020): 1769-1777.

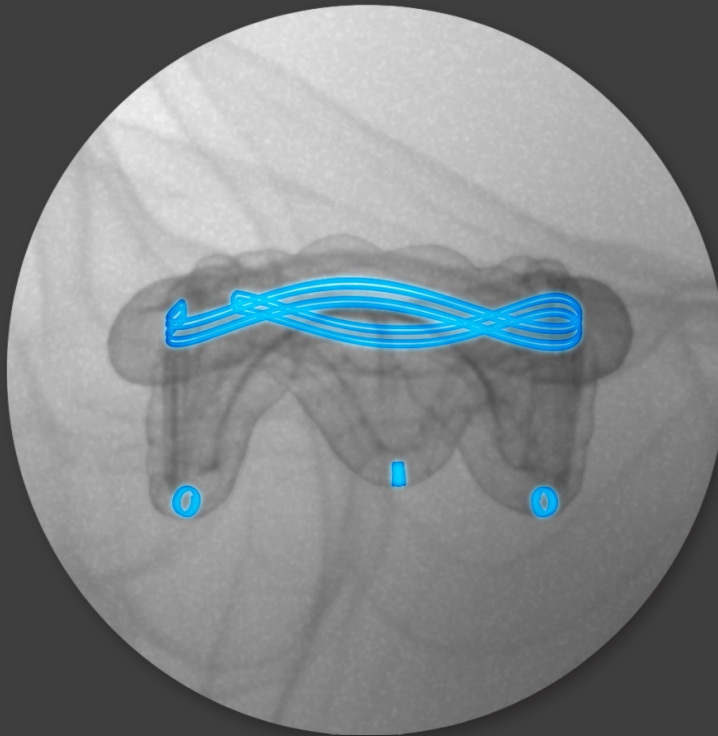
Fact #4

Radiopaque Markers Prepare Patients for Non-Invasive Valve-in-Valve Reoperations

The newest generation of the Epic™ valve platform was designed to provide the same trusted durability of its predecessors and more.

For example, the Epic Plus valve has radiopaque markers that enable increased visibility under fluoroscopy (x-ray).

These special radiopaque markers facilitate “Valve-in-Valve” procedures should the patient need a future re-operation. Valve-in-Valve procedures do not require an incision to the patient’s chest (or ribs) and do not require use of a heart-lung machine.



Radiopaque markers seen under fluoroscopy on the Epic Plus valve annulus and stent posts

Fact #5

Leading Heart Surgeons Trust the Epic™ Valve



“The Epic Plus tissue valve is an innovative solution for the lifetime management of heart valve disease.”

– **Dr. Kenith Fang**, Chief of Cardiothoracic Surgery,
Banner University Medical Center Phoenix



“Patients need to consider durability research. The Epic valve has great long-term results with 96% freedom from re-operation at 10 years.”

– **Dr. Ibrahim Sultan**, Surgical Director, Heart Valve
Center, University of Pittsburgh Medical Center



“The Epic Valve is my ‘go-to’ biological valve. It gives the patient a normal life.”

– **Dr. Eric Charbonneau**
Quebec Heart Institute



“This is a ‘Game Changer’. Using new radiopaque markers on the Epic Plus valve, we can perform Valve-in-Valve re-operations without a surgical incision.”

– **Dr. Jason Rogers**, Clinical Professor, Division of
Cardiovascular Medicine, University of California
Davis Health System

Fact #6

Epic™ Plus Enables Minimally-Invasive Operations

Minimally-invasive techniques for mitral valve replacement surgery are designed to reduce physical trauma, decrease patient pain, shorten hospital stays and accelerate recovery.

For example, the use of robot-assisted procedures enable surgeons to perform safe, mitral valve replacement operations with small incisions.



One of the unique features of the Epic Plus valve is its very low profile. This special design feature enables surgeons to implant the valve using minimally-invasive techniques including robot-assisted surgery.



“Thanks to the Epic Plus valve, I can use minimally-invasive robotic techniques to reduce patient discomfort and help patients recover faster.”

— Dr. Robert Smith, Chairman, Cardiovascular Surgical Services, Baylor Scott & White The Heart Hospital – Plano



"I was short of breath and had chest pressure. I felt sick. After my mitral valve replacement, I feel good and my symptoms have disappeared."

— Maria, 70, Epic heart valve patient



Fact #7

Patients Celebrate the Epic™ Valve

With over 250,000 implanted worldwide, the Epic valve platform is one of the most trusted and reliable heart valve replacement devices for patients.

The Epic valve is made by Abbott, a leading medical company that specializes in the research, development and implantation of heart valve replacement devices.

For more information, please visit:

 **EpicPlusValve.com**

To find a surgeon who specializes in the Epic Plus valve, [click here](#).



Abbott is a sponsor of this educational eBook.